



H HERITAGE

INDUSTRIAL CENTER

FOR LEASE

HERITAGE INDUSTRIAL CENTER

3390 HERITAGE ROAD
BUILDING C
CHULA VISTA, CA

±40,600 SF INDUSTRIAL BUILDING
NOW UNDER CONSTRUCTION

ANTICIPATED COMPLETION JULY 2023

MICHAEL MOSSMER, SIOR
Senior Vice President, Partner | Lic. #00998326
858.458.3347 | mmossmer@voitco.com

Voit
REAL ESTATE SERVICES

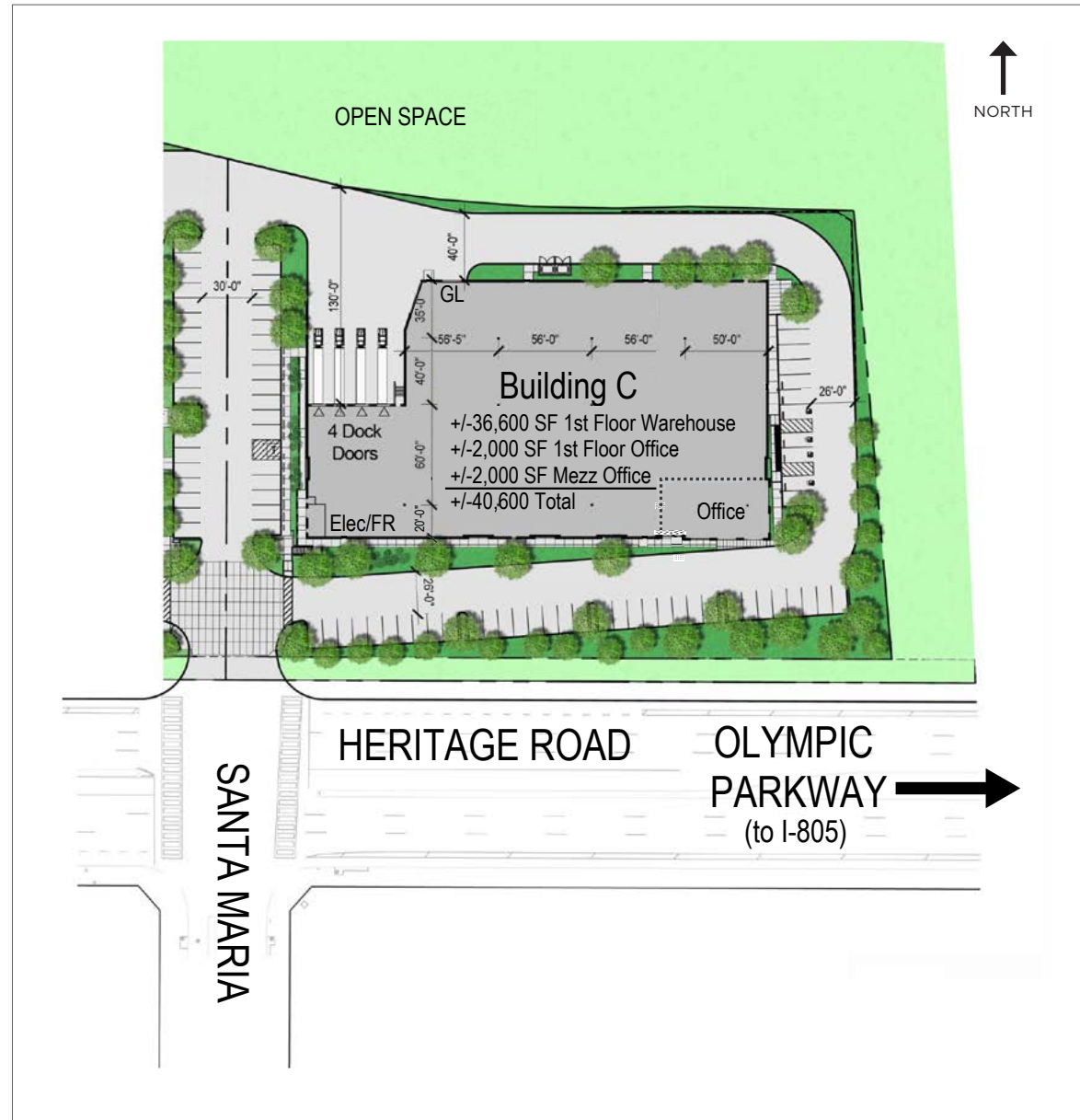
DEVELOPED BY
**ROCKEFELLER
GROUP**

BUILDING SPECIFICATIONS



- » ±40,600 SF Freestanding Building
- » Includes ±2,000 SF of Mezzanine
- » Concrete around building (truck court, drive aisle and parking area)
- » Can be combined with Building B for ±98,300 SF
- » Single Tenant Building
- » 28' Ceiling Clear Height at 1st Column
- » Skylights Throughout
- » ESFR Sprinkler System
- » Column Spacing 50' x 52'
- » 3,000+ Amps of 277/480 Volt Power
- » Four (4) Dock Doors
- » One (1) Grade Level Door
- » 6" Floor Slabs
- » 63 Parking Spaces
- » Possible Secured Yard/Parking
- » 2.46 Acre Parcel
- » Immediate Access to I-805, I-5 and SR-125 Freeways via Main Street or Olympic Parkway

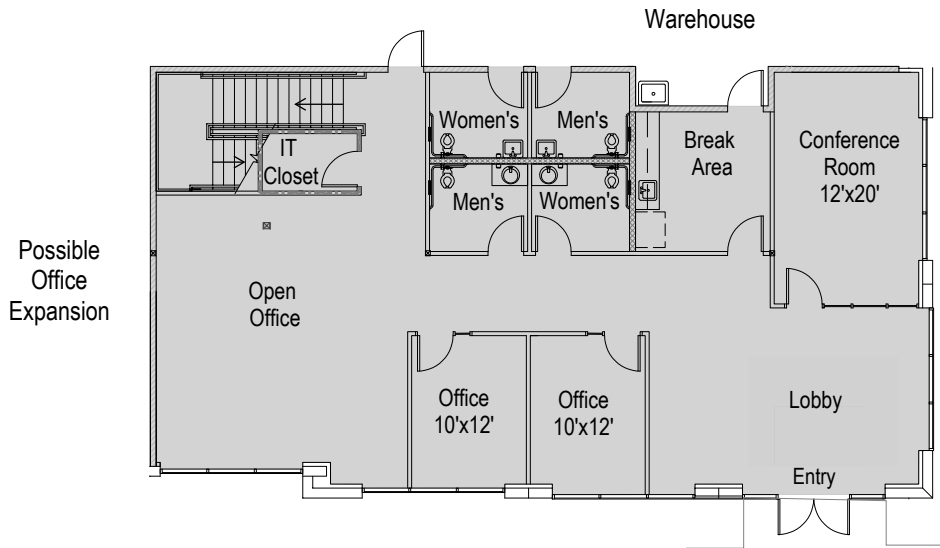
» **Available July 2023 (Projected)**



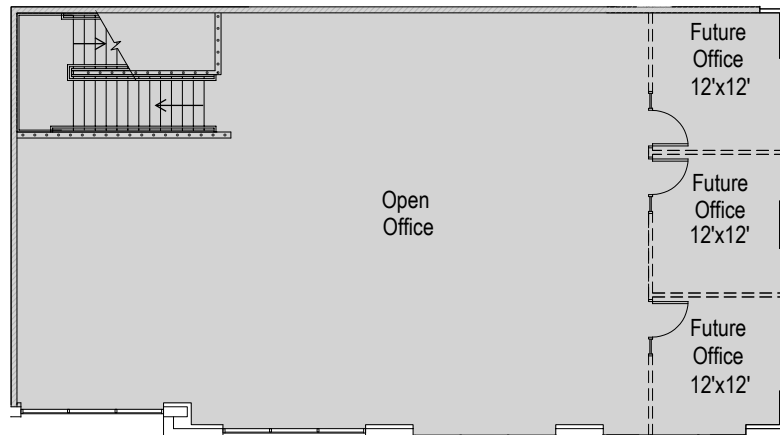
FLOOR PLANS

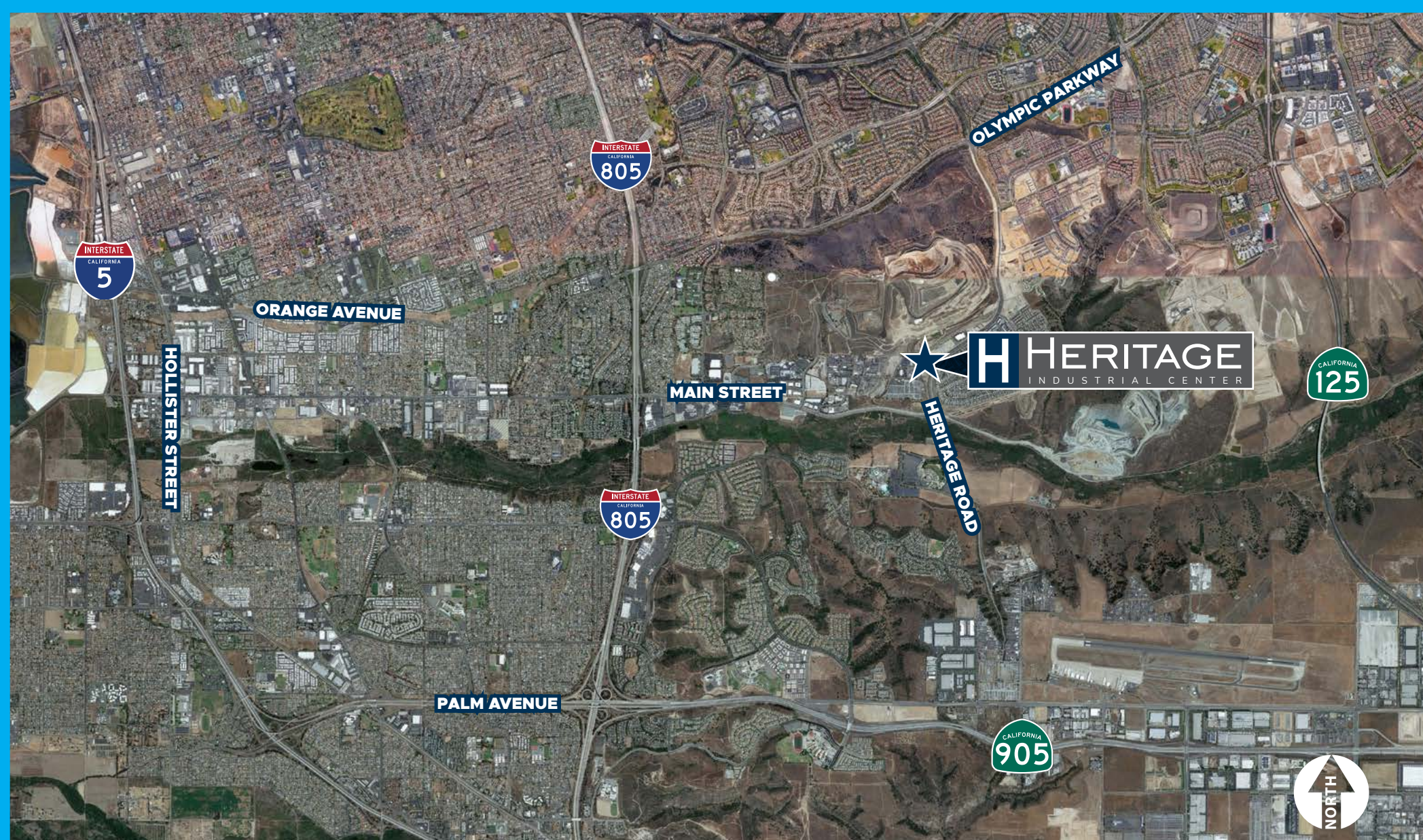


BUILDING C - FIRST FLOOR (±2,000 SF)



BUILDING C - SECOND FLOOR (±2,000 SF)





MICHAEL MOSSMER, SIOR
Senior Vice President, Partner | Lic. #00998326
858.458.3347 | mossmer@voitco.com

Voit
REAL ESTATE SERVICES

DEVELOPED BY
**ROCKEFELLER
GROUP**

4180 La Jolla Village Drive, Suite 100, La Jolla, CA 92037 | 858.453.0505 | 858.408.3976 F | Lic #01991785 | www.voidco.com

Licensed as a Real Estate Salesperson by the DRE. The information contained herein has been obtained from sources we deem reliable. While we have no reason to doubt its accuracy, we do not guarantee it.
©2022 Voit Real Estate Services, Inc. All Rights Reserved.